

**EL-ArtNet1024
Two Port Bidirectional
ArtNet/DMX Converter**

User Manual

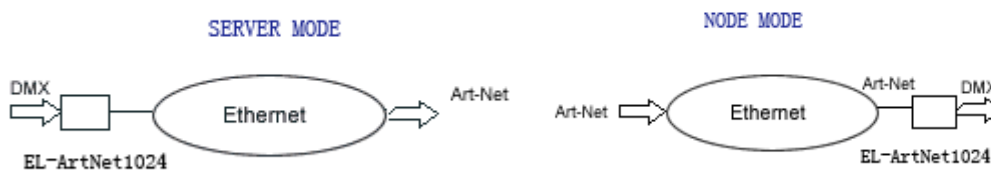
0. SAFETY INFORMATION & MAINTENANCE

Read this manual before powering or installing the device, follow the safety precautions listed below and observe all warnings in this manual.

- Be sure that the local power outlet matches that of the required voltage of the power supply included with this device.
- To reduce the risk of fire or electrical shock, do not expose the unit to rain or high levels of moisture.
- Do not spill water or other liquids into or on your unit.
- Do not open the unit as there are no user serviceable parts inside.
- Do not dismantle or modify the unit, as this voids all warranties.
- Do not attempt repairs. Repairs by unqualified people could cause damage or faulty operation. Contact your local authorized service center.
- Unplug this unit when not used for long periods of time.
- Clean only with dry cloth.
- Handle this unit carefully. Any strong shock or vibration may result in malfunction.

1. DESCRIPTION

EL-ArtNet1024 is a bi-directional Ethernet to DMX converter. Provide two-way network ArtNet to DMX512 serial bidirectional conversion capabilities. Is a high-speed ARM processor, follow the standard ArtNet protocol provides a standard RJ45 network interface and DMX512 output interface. EL-ArtNet1024 highly compatible protocol standard, real-time , stable and reliable. It has been designed to transport DMX through an Ethernet. which has two operating modes: NODE mode and SERVER mode. NODE mode convert ArtNet signal into DMX512. Server mode route DMX512 (X2) signal into ArtNet via Ethernet transmission.



EL-ArtNet1024 factory configured an IP address 2.xxx and subnet mask 255.0.0.0, generally without modification, can plug and play. However, for advanced users, network configuration can be modified using the configuration tool.

1.1 SERVER MODE

In Server mode EL-ArtNet1024 capture the values of DMX frame and transmit them by Ethernet network. Like a standard ArtNet console. It makes the traditional console into a network console quickly and save user investment, has great economic benefits.

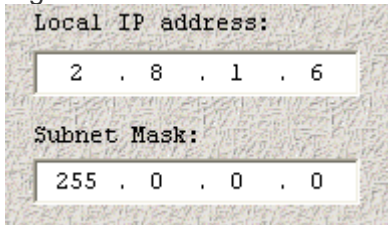
1.2 NODE MODE

In ArtNet node mode, EL-ArtNet1024 receive the same **UNIVERSE** (subnet and univ are the same) Signal that ArtNet compatible devices issued and convert it into DMX512 signal again, in order to control DMX devices.

1.3 Configuration

EL-ArtNet1024 abnormal succinctly using software tools to configure the device. ArtNet standard uses a Class A IP address, you can set 2.xxx (subnet mask 255.0.0.0) or 10.xxx (subnet mask 255.0.0.0). If the console has a special setting, change the IP to the same network segment.

Figure:



Local IP address:
2 . 8 . 1 . 6

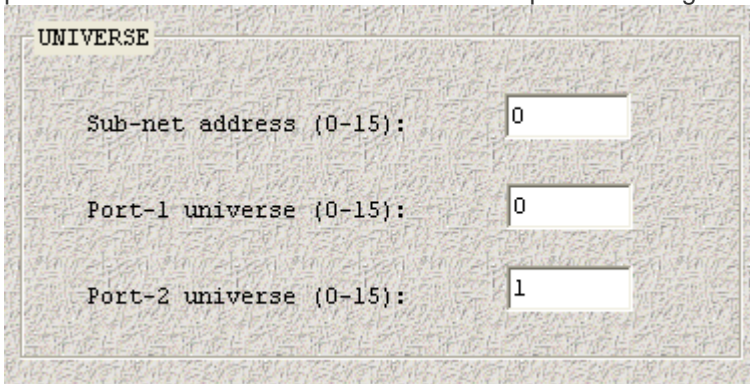
Subnet Mask:
255 . 0 . 0 . 0

ArtNet node is identified by UNIVERSE. UNIVERSE is divided into two parts subnet (SUBNET) and DMX universe (UNIV), setting range is 0 to 15. The same equipment set to the same subnet, two DMX ports corresponding UNIV number.

Conversion relationship:

$$\text{UNIVERSE} = \text{SUBNET} * 16 + \text{UNIV}$$

When the server mode, DMX signal here UNIVERSE routed to the network. When a node mode, two DMX ports are filtered out ArtNet UNIVERSE own packet routing to DMX network.



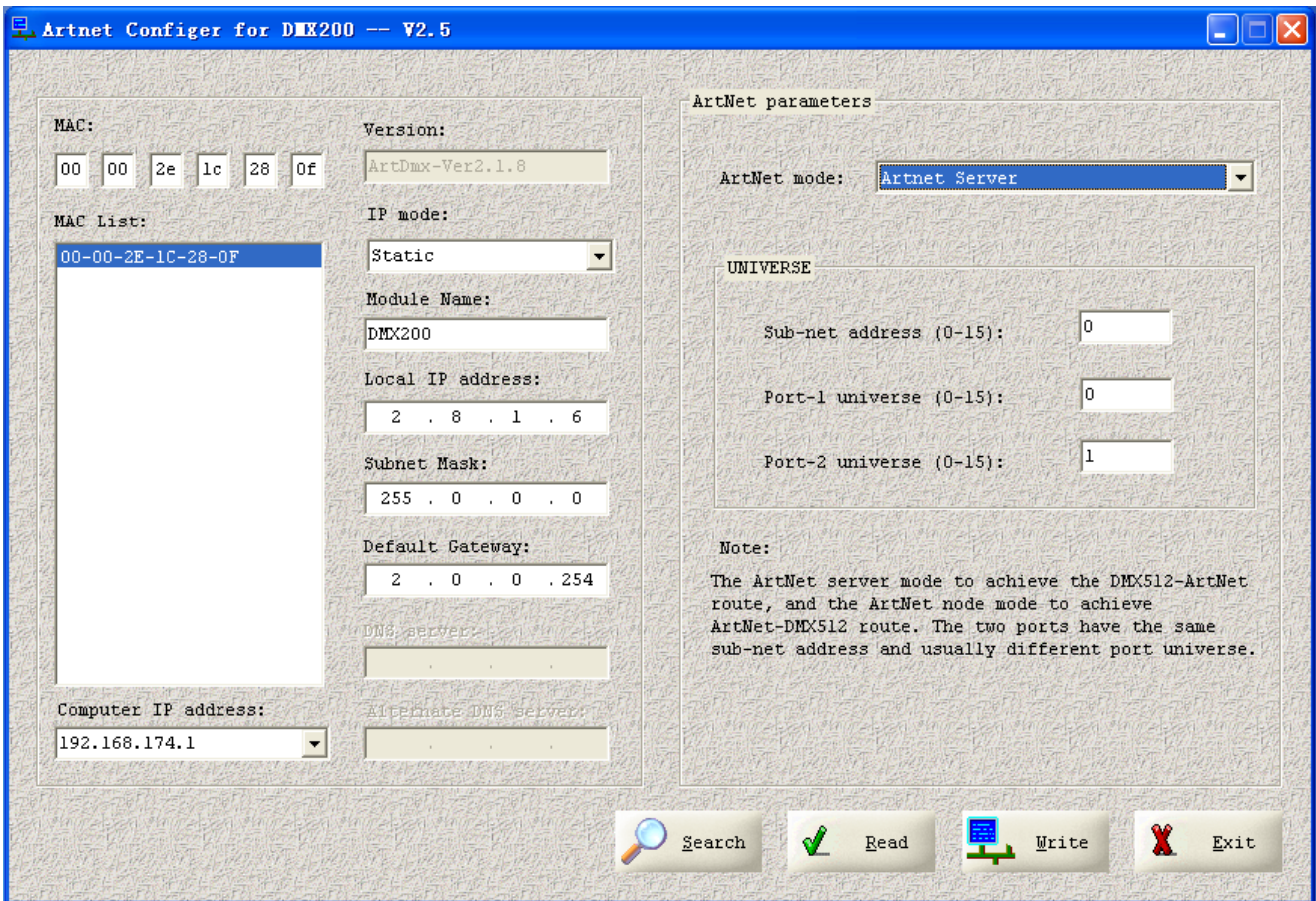
UNIVERSE

Sub-net address (0-15):

Port-1 universe (0-15):

Port-2 universe (0-15):

2. Server Mode Configuration



1. The PC and the devices connected to the network via a standard RJ45 cable (straight or on the same LAN).
2. Start the configuration tool, click on the search button to the left of the current physical address list will appear MAC address of the device.
3. Select the MAC address, configurable parameters corresponding control will be lit.
4. Click ArtNet mode combo box to select the server, set the appropriate subnet and group addresses.
5. Click the Settings button, the parameters will be written to the device. Configuration with immediate effect.
- 6 Click. Reading button, you can check the settings are successful.

3. Node mode Configuration

The following is a typical configuration of node mode.

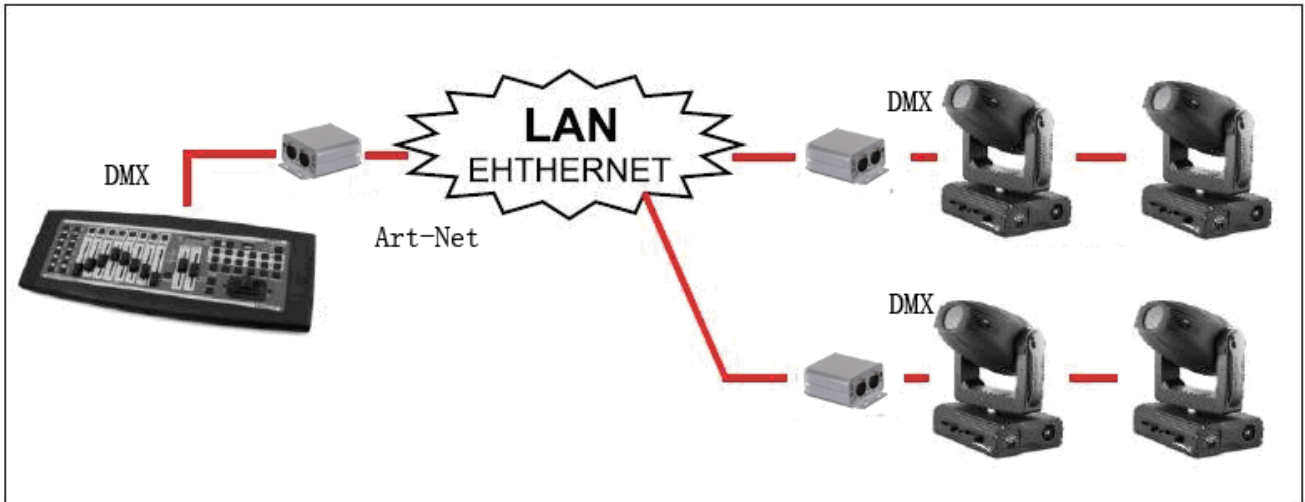
The screenshot shows the 'ArtNet Configurator for DMX200 -- V2.5' window. The interface is divided into several sections:

- MAC:** A grid of input fields for the MAC address, currently showing '00 00 2e 1c 28 0f'.
- MAC List:** A list box containing the MAC address '00-00-2E-1C-28-0F'.
- Version:** A text field containing 'ArtDmx-Ver2.1.8'.
- IP mode:** A dropdown menu set to 'Static'.
- Module Name:** A text field containing 'DMX200'.
- Local IP address:** A text field containing '2 . 0 . 1 . 6'.
- Subnet Mask:** A text field containing '255 . 0 . 0 . 0'.
- Default Gateway:** A text field containing '2 . 0 . 0 . 254'.
- DNS server:** An empty text field.
- Alternate DNS server:** An empty text field.
- Computer IP address:** A dropdown menu set to '192.168.174.1'.
- ArtNet parameters:** A section containing:
 - ArtNet mode:** A dropdown menu set to 'Artnet Node'.
 - UNIVERSE:** A sub-section with three text fields:
 - Sub-net address (0-15): 0
 - Port-1 universe (0-15): 0
 - Port-2 universe (0-15): 1
 - Note:** A text block stating: 'The ArtNet server mode to achieve the DMX512-ArtNet route, and the ArtNet node mode to achieve ArtNet-DMX512 route. The two ports have the same sub-net address and usually different port universe.'

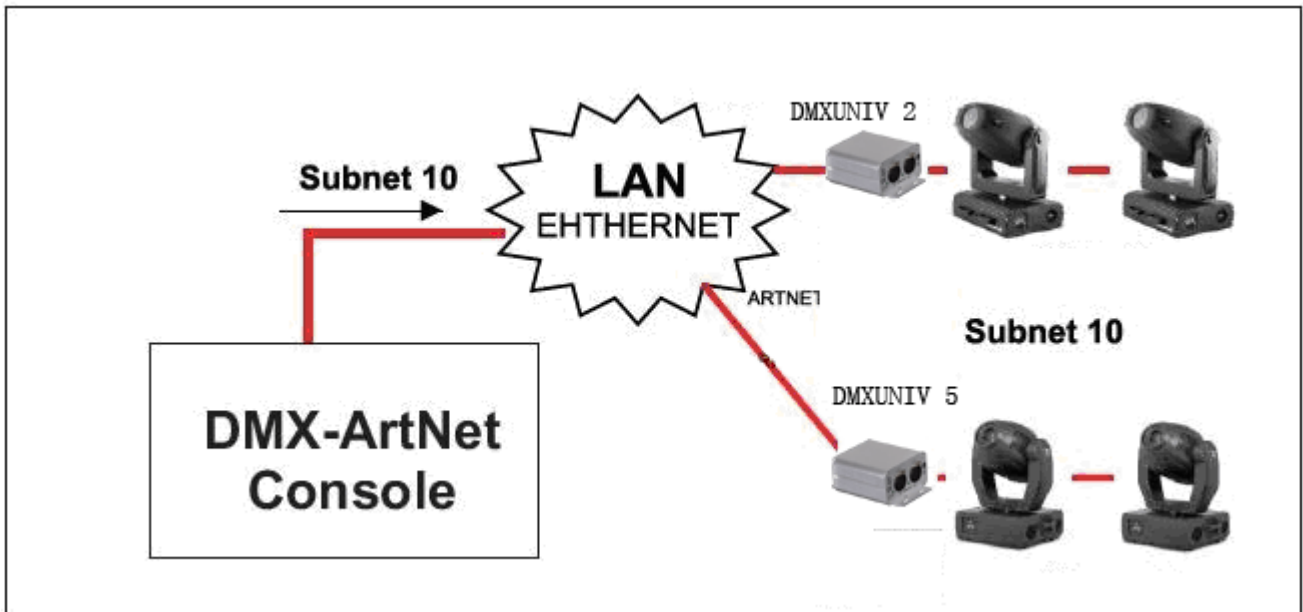
At the bottom of the window, there are four buttons: 'Search' (magnifying glass icon), 'Read' (checkmark icon), 'Write' (floppy disk icon), and 'Exit' (red X icon).

Configuration process as above. Two DMX ports can be set to the same address, then the output of the same content.

4. CONNECTION EXAMPLES



Mixed connection: Connect the device of server mode to a DMX console, one or more device of node mode.



ART-NET Node mode: Using an Art-Net DMX console, transmitting Subnet 10 with its 16 universes; with two receivers, configured in Subnet 10 and the universes they want to receive.

5. SPECIFICATIONS

- Main Supply: DC 9 V, 500 mA
- Network Protocol: Art-Net / DMX512
- Dimensions: 80x45x80 mm
- Weight: 390 g



This symbol on the product or in its packaging indicates that this product shall not be treated as household waste. Instead it shall be handed over the applicable collection point for the recycling of electrical and electronic equipment. By ensuring this product is disposed of correctly, you will help prevent potential negative consequences for the environment and human health, which could otherwise be caused by inappropriate waste handling of this product. The recycling of materials will help to conserve natural resources. For more detailed information about recycling this product, please contact your local city office, your household waste disposal service or the shop where you purchased the product